

200kg V

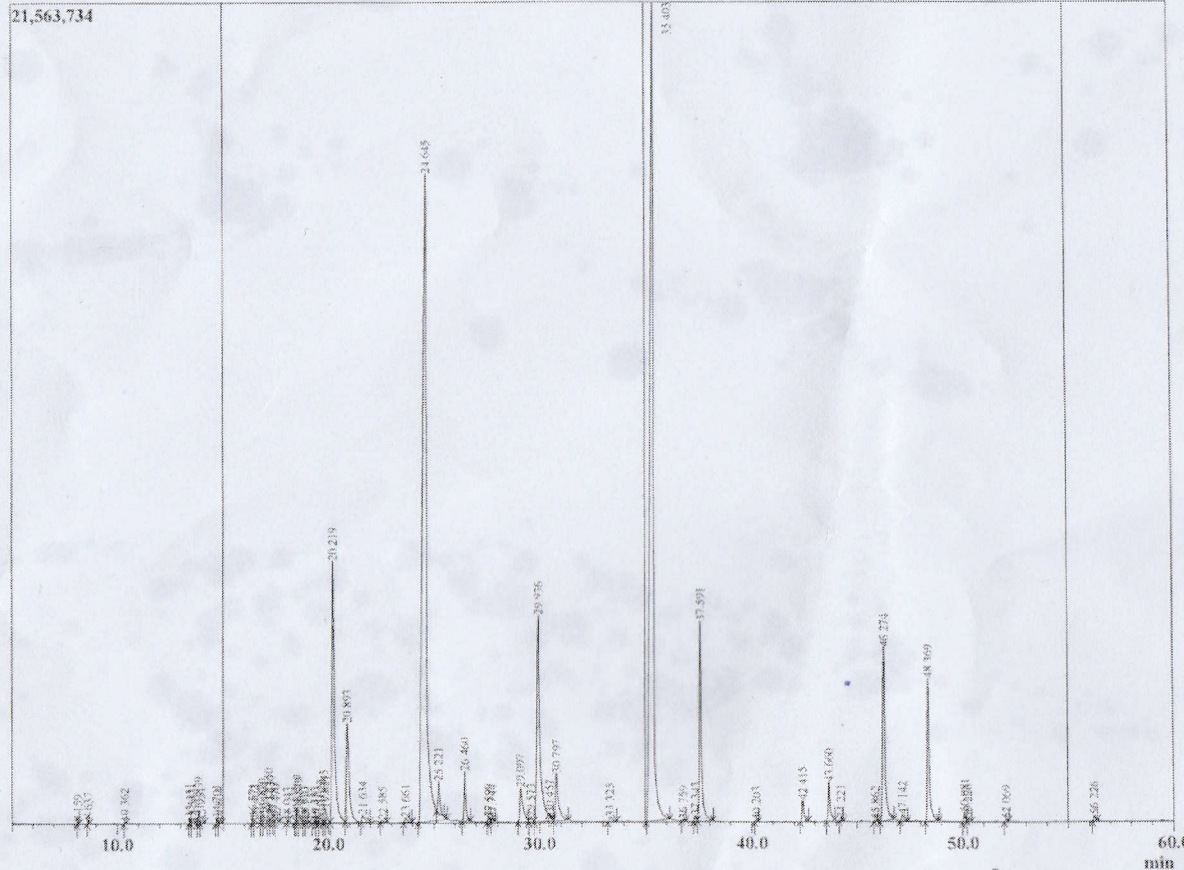
Sample Information

Analyzed by : R Nacheva
 Analyzed : 8/8/2019 4:28:48 PM
 Sample Type : Essential Oil
 Sample Name : Lavandula sample of Jordan Stoianov
 Sample ID : D080819C
 Injection Volume : 1.00
 Data File : C:\AGCMSsolution\Data\Project\1\Lavandula sample of Jordan Stoianov_D080819C_003.qgd



R. Time	Name	Area%
8.159	Butyl acetate	0.015
8.637	Hexane, 1-methoxy-[RT14.391, PI850]	0.034
10.362	Hexanol <u></u> [RT 17.38, AI863]	0.017
13.431	Thujene <alpha>	0.068
13.543	Thujene <alpha>	0.022
13.839	Pinene <alpha>	0.147
13.951	Pinene <alpha>[RT22.163, AI 939]	0.054
14.701	Camphene [RT 23.475, AI 954]	0.061
14.804	Camphene [RT 23.475, AI 954]	0.030
16.371	1-Octen-3-ol[RT25.891, AI974]	0.073
16.462	1-Octen-3-ol[RT25.891, AI974]	0.103
16.820	Octan-3-one	0.134
16.904	3-Octanone	0.179
17.150	Myrcene	0.263
17.236	Myrcene	0.265
17.383	Isobutyl isobutyrate[RT20.719, AI908]	0.105
17.470	Isobutyl isobutyrate[RT20.719, AI908]	0.091
18.043	Phellandrene <alpha>	0.013
18.431	3-Carene	0.033
18.509	Hexyl acetate[RT28.486, AI1007]	0.201
18.579	Hexyl acetate	0.276
18.823	Terpinene <alpha>-[RT 28.853, AI 1017]	0.052
18.910	Terpinolene	0.031
19.333	Cymene <para>	0.041
19.410	Cymene <para>	0.052
19.622	Limonene [RT 30.079, AI 1029]	0.240
19.785	1,8-cineole	0.298
19.851	Cineole <1,8>	0.322
20.219	Ocimene <Z-beta>	7.224
20.893	Ocimene <E-beta>	3.077
21.634	Terpinene <gamma>	0.295
22.585	Linalool oxide <trans-pyramoid> [RT34.51, /	0.065
23.661	Terpinolene	0.147
24.645	Linalool	28.699
25.221	Octen-3-yl acetate<1>	0.678
26.460	Ocimene <allo>	1.007
27.590	Camphor	0.095
27.744	Hexyl isobutyrate @39.232, 1152	0.069
29.097	Lavandulol[RT40.598, AI1165]	1.302
29.573	Penta cyclohexadene isomer [RT41.54, AI115	0.148
29.936	Terpinen-4-ol	7.349
30.457	Cryptone	0.028
30.797	Terpineol <beta>	1.609
33.325	Nerol[RT45.229, AI1227]	0.165
35.403	Linalyl acetate	30.426
36.759	Isopulegyl acetate	0.020
37.343	Bornyl acetate	0.104
37.591	Lavandulyl acetate	4.700
40.203	Tiglate hexyl	0.023
42.415	Neryl acetate	0.454
43.660	Geranyl acetate	0.851
44.221	Sesquithujene <7-epi> [RT56.981, AI1390]	0.045
45.862	Bergamotene <cis-alpha> [RT58.811, AI1411]	0.028
46.274	Caryophyllene	4.508
47.142	Bergamotene <trans-alpha> [RT 60.162 AI 14	0.129
48.369	Farnesene <(E)-beta>	3.218
50.081	Germacrene D	0.193
50.226	Farnesene <(E)-beta>	0.068
52.069	Cadinene <gamma>	0.049
56.226	Caryophyllene oxide	0.115
		100.000

Chromatogram Lavandula sample of Jordan Stoianov C:\AGCMSsolution\Data\Project\1\Lavandula sample of Jordan Stoianov_D080819C_003.qgd TIC



Comments:

Typical Ranges of Main Components:

